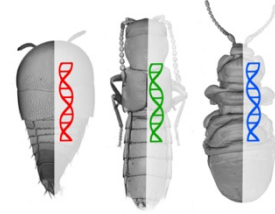


Postdoc position in insect genomics



Group of Evolutionary Entomology (Aleš Buček)
Faculty of Tropical AgriScience, Prague, Czechia
<https://bucek.ftz.czu.cz>



Location: Czech University of Life Sciences, Prague, Czechia

Starting date: June 2023 (start negotiable) for 1-2 years and possible extension.

Application deadlines: Applications will be evaluated until the position is filled.

Organisms often evolve similar adaptations to similar environments in the process of convergent evolution. Such observations suggest that the trajectory of phenotypic evolution is amenable to predictions. Whether the genomic trajectories of convergent organisms are also - in principle - predictable is unclear due to the scarcity of genomic evidence from convergent organismal groups. To answer this fundamental evolutionary question, we are using a model system consisting of **rove beetles (Staphylinidae: Aleocharinae)** and **scuttle flies (Phoridae)** that adapted more than twenty times repeatedly to live in symbiosis with **termites**.

The successful candidate will use comparative genomic methods to uncover the extent, the timescale, and the hierarchical level of parallel genome sequence evolution that accompany the evolution of convergent adaptations. He/she will have a head start with analyses of already generated preliminary genomic and phylogenetic sequence datasets while he/she will be building datasets for additional species and will be optionally pursuing his/her independent research questions with our insect model system.

We require

- curiosity about evolutionary questions
- motivation to lead research project with domestic and international collaborators
- excellent written and spoken communication ability in English
- PhD degree in biology, bioinformatics, or related fields
- experience in phylogenetics and/or genomics

We offer

- supportive research lab situated within a green campus of a dynamic university <30min from the center of the energetic city of Prague
- competitive starting monthly net salary based on previous experience ~ 1,700-1,900 EUR (~ 125-140% of average net salary in Czechia, note that the living cost is generally lower in Czechia compared to the western Europe); bonuses for publications
- participation in international collaborations (Germany, Japan)

We also encourage and offer support to the candidates willing to further strengthen their research profile by applying for independent funding, such as Postdoc individual fellowship (by Czech Science Foundation), Marie Curie fellowship, EMBO fellowship.

*Apply by sending a single pdf including motivation letter (~ 1 page), CV, and contact information for two reference persons (one of them preferably previous supervisor) to Aleš Buček (buceka@ftz.czu.cz).
Inquiries for further details are welcome.*